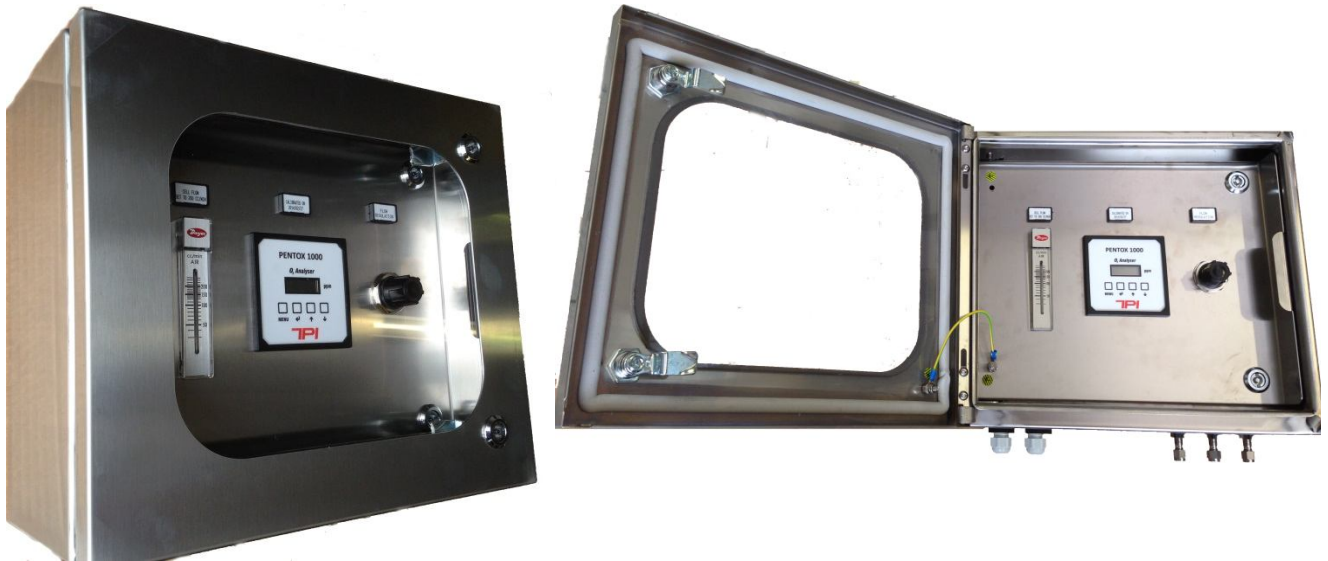


# Pentox 1000 Trace Oxygen Analyser



## Features

- Tunkey layout,
- Sample regulation included
- Fast, easy one-point calibration
- Low maintenance
- Measures oxygen from 1 to 1000 ppm
- Fast response
- Calibration checks or adjustments seldom required;
- One-point calibration is sufficient for entire range
- Accuracy 1 ppm
- Max sample pressure 10 atm
- IP65

## Applications

- Air separation plants
- Pure gas
- Breweries
- Heat treat and metallurgical processes
- Food use and mixtures
- Gas blending

PENTATEC SRL  
Via A. Moro n.7 – 24035 Curno (Bg) - ITALY  
Phone: +39 035 461673  
C.F e P.Iva: 03943410161  
mail : [info@pentatecsrl.com](mailto:info@pentatecsrl.com)

# Specifications

Pentox 1000 Trace Oxygen Analyser



## Specifications

### Supply

Input Voltage 85-230VAC

Supply current: 140 mA at 24VDC nominal , all relays energised, 20 mA drawn on current loop.

### Outputs

Analogue Output: 4-20mA analogue output (10-bit resolution)

ACTIVE OR PASSIVE protected with Galvanic separation

### Sensor Input

No of Channels: 1

Sensor 1 PPM oxygen

### Relays (Optional)

2 Single pole change over Rating 6 Amps 250 v AC

### Fuses

Fuse 500mA anti-surge on board fuse for circuit protection.

### Additional Features

Display: 4 Digit, 7 Segment Display.

Keypad: 4-Button Keypad

Software: Software configuration, calibration and data logging provided by PC communications.

RS232 Output Communications with PC @ 19200 baud.

### RS232 connections

Pentox Connections		PC Connections		
Function		Function	9-way 'D'	25-way 'D'
TxD	RxD	2	3	
RxD	TxD	3	2	
0V	0V	5	9	

PENTATEC SRL  
Via A. Moro n.7 – 24035 Curno (Bg) - ITALY  
Phone: +39 035 461673  
C.F e P.Iva: 03943410161  
mail : info@pentatecsrl.com

# Pentox 1000 Trace Oxygen Analyser

Pentox 1000 Trace Oxygen Analyser



## Pentox 1000B Trace Oxygen Analyser Benchtop portable Housing



The PENTOX analyser has been designed to perform ppm level analysis of oxygen in pure gases (N<sub>2</sub>-Ar-CO<sub>2</sub>)

Simple keypad calibration facility (utilising onboard LCD display).

4-20mA current source output for gas level indication (10-bit resolution).

(PCB mounted screw terminals for all connections.

RS232 output for transmission of live data to a PC.

Benchtop portable Housing

The work range is 0-1000 ppm with a resolution of 1 ppm.

The analogue output provides a means of indicating to external equipment (e.g. data loggers, remote displays) the gas levels currently being detected by the system.

The output is that of a Current Source (4-20mA), where 4mA represents zero gas and 20mA represents gas at the sensor FSD

PENTATEC SRL  
Via A. Moro n.7 – 24035 Curno (Bg) - ITALY  
Phone: +39 035 461673  
C.F e P.Iva: 03943410161  
mail : [info@pentatecsrl.com](mailto:info@pentatecsrl.com)